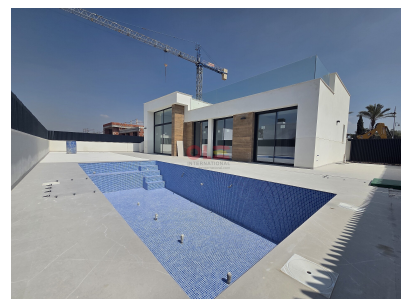


2 bedroom Detached Villa in Alhama De Murcia

Ref: NP131414

**Price from
269,000€**



Property type : Detached Villa

Location : Alhama De Murcia

Bedrooms : 2

Bathrooms : 2

Garden : Private

Orientation : Southeast

Views : To the private garden

Parking : Private parking

House area : 90 m²

Plot area : 303 m²

Solarium area : 53.50 m²

Airport : 30 km.

✓ Sauna

✓ Terrace

NEW BUILD VILLAS IN CONDADO DE ALHAMA GOLF COURSE New Build residential complex of villas in Condado de Alhama. Villas with 2 bathrooms, 2 bathrooms, open plan kitchen with living room, fitted wardrobes, terrace, private solarium and parking space in the garden. An options private swimming pool at an extra cost. INCLUDED in the price: - ALLOCATED PARKING SPACE in the private garden. - SOLARIUM with outside staircase. - BATHROOMS: the shower screens, vanities, mirrors and the LED lighting embedded in the false ceiling. - KITCHEN: the extractor fan, the LED lighting embedded in the ceiling. - AIR CONDITIONING pre-installed. - BUILT-IN CABINETS are lined. - ELECTRIC BLINDS. - AEROTHERMIA system. - WATER SOFTENER installation. - CHARGING POINT for ELECTRIC [amp;] HYBRID VEHICLE installation. Located into the private enclosed golf resort of Condado de Alhama, between Alhama de Murcia and Mazarrón. Condado de Alhama Golf Resort is a fantastic Golf Resort with many facilities and services . A shopping centre, a sports centre, a variety of bars and restaurants, supermarkets and over 25 communal swimming pools and gardens. Condado de Alhama Golf Resort has its own Jack Nicklaus designed golf course and is only 15 minutes from the beautiful beaches of Bolnuevo and Mazarrón. Mazarrón has over 35 km of coastline, much of which is unspoilt coastline. Numerous beaches in the Bay of Mazarrón have been awarded the Blue Flag for their quality. Condado de Alhama Golf Resort is only 20 minutes from the new Corvera International Airport.